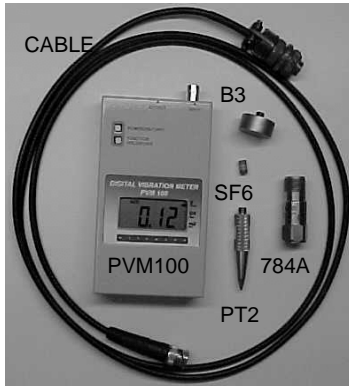


PVM100 Digital Vibration Meter



FEATURES:

- Self-contained meter with battery
- Complete accessory kit
- Large digital display
- Uses industry-standard IEPE accelerometers
- Audio signal output jack
- Low-power electronic circuit

BENEFITS:

- All components together in one case
- Easy-to-see display
- One-button operation for ease of use
- Audio output allows listening to the vibration signal with mini-headphones
- Three-in-one vibration measurement: acceleration, velocity, displacement

The PVM100 incorporates a large-digit liquid crystal display with one-button operation making it the easiest vibration meter to use.

The accessory kit supplied with the PVM100 helps user acquire vibration readings fast. Accelerometer mounting options allow using the optimum probe/tip/mount for the frequency range required.

Pickup:	MODEL 784A, 100 mV/g
Input terminal:	BNC connector, 3 mA IEPE Powering
Measurement range: ¹	
Acceleration:	0 to 19.99 g (peak)
Acceleration resolution:	0.01 g (peak)
Velocity:	0 to 19.99 ips (RMS)
Velocity resolution:	0.01 ips (RMS)
Displacement:	0 to 199.9 mil (P-P)
Displacement resolution:	0.1 mil (P-P)
Frequency range: ^{1,2}	
Acceleration	5 Hz to 5,000 Hz, within 5%
Displacement and Velocity	10 Hz to 5,000 Hz, within 5%
Limit of error: ³	
Acceleration measurement	3% of Reading ± 1 digit
Displacement and velocity measurement	.. 5% of Reading ± 1 digit
Temperature stability:	+0.15% of Reading/°C (TYP)
AC output, 3.5 mm diameter mini phone plug:	
Output impedance	1 kΩ
Acceleration:	100 mV/g, ± 2 Vmax
Velocity:	70 mV/ips, ± 2 Vmax
Displacement:	20 mV/mil, ± 2 Vmax
Noise level:	1 mV (RMS) or less
Digital display:	
Liquid Crystal Display	3(1/2) digits,
Update rate	3 times/second
Hold:	Holds the measurement while the pushbutton is pressed
Battery:	(1) Energizer 522 (9 V), or equal
Operating power supply voltage:	6 Volts, minimum
Battery voltage alarm:	6 Volts
Continuous operating time:	20 hours or more
Operating temperature range:	
Minimum	-10°C (14°F)
Maximum	50°C (122°F)
Dimensions:	75 (W) x 130 (H) x 24 (D), mm
Weight (with battery):	280 gram (9 oz.)

NOTES: ¹ Maximum acceleration limit is 20 g (peak) for velocity and displacement measurements

² All amplitude accuracies are dependent on the proper mounting of the 784A

³ At 10 g (peak), 40 mil (P-P), 20°C ± 5°C

ACCESSORIES SUPPLIED: 784A Accelerometer, SF6 mounting stud, R2-6-J5A-6 cable, B3 flat magnet, PT2 Probe tip, PVM100 Operating Guide, and plastic carrying/storage case

21 Firstfield Road, Gaithersburg, MD
20878 USA
1-800-WILCOXON
Tel 301-330-8811 Fax 301-330-8873
Email sensors@wilcoxon.com
Web www.wilcoxon.com

98906 Rev. A 2/05

**WR WILCOXON
RESEARCH**